



# Future-Ready **AI Infrastructure for a Sustainable World**

---

Celestica's Platform Solutions



Celestica's mission is to enable the world's best businesses to turn their vision into reality. We build trusted relationships and solve complex technology challenges to help our customers realize greater value, potential and outcomes.

Celestica is a global technology partner with market-led investments in the design, production and service of innovative connectivity and cloud solutions. We leverage over 30 years of manufacturing and supply chain expertise, an optimized global network, and world-class design and engineering to empower customers in achieving their business objectives.

Through our robust portfolio of cutting-edge networking, compute, and storage Platform Solutions, Celestica, along with key software solution partners, enables customers to accelerate the deployment of high-quality, innovative products while reducing R&D and production costs. We deliver flexibility and customization for today's most challenging applications, on-premises or in public clouds.



**\$9.65B**  
in 2024 revenue



**26,000+**  
employees worldwide



**40+** locations  
in **16** countries

## Celestica is the Innovation Engine for some of the World's Leading Brands



**Top 5** Global Cloud  
Service Providers / Hyperscalers

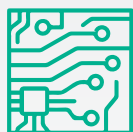


**Top 3** Non-x86 Server OEMs



**4 of the Top 5** Storage OEMs

## Celestica is ready to help you develop tomorrow's leading technologies, today.



### We are future-focused

With strong technology ecosystem partnerships, a collaborative design approach, and market-driven product solutions, we're at the forefront of next-gen technology – providing you with a distinct competitive edge.



### We unlock differentiated value-added solutions

As your complete technology partner, our innovative solutions and depth of experience enable you to streamline every aspect of product realization – so you can efficiently deploy the highest quality products, while decreasing complexity and cost.



### We share your vision for a more sustainable world

At Celestica, sustainability is at the core of what we do. We optimize sustainability at every stage of the product lifecycle – extending product lifespan through green design and manufacturing, responsible IT asset management and disposal.



### We accelerate technology

We've invested in developing a leading-edge portfolio of platform solutions and a global network of regionalized locations to help you navigate technology challenges and market dynamics quickly – enhancing your innovation, agility and resiliency.

# Celestica's Platform Solutions Portfolio

Delivering comprehensive, customizable support for your Enterprise and Data Center needs

## 800G FAMILY OF NETWORKING SWITCHES

Propelling AI and ML connectivity with unprecedented speed and agility



NOW SHIPPING!



**DS5000**  
2U 64-port 800GbE  
Data Center Switch



**DS4101**  
1U 32-port 800G  
Data Center Switch

NOW SHIPPING!



**DS4100**  
1U 16-port 800G  
Data Center Switch

## HIGH-PERFORMANCE SWITCHES

Performance, flexibility and efficiency to fit your unique applications



**DS4000 / DS4001**  
1U 32-port 400GbE  
Data Center Switch



**DS3001**  
2U 64-Port 100GbE  
Data Center Switch



**DS3000**  
1U 32-port 100GbE  
Data Center Switch

## ENTERPRISE ACCESS SWITCHES

Enabling connectivity, scalability and security at the enterprise edge

NEW



**ES1500**  
1U 8 / 24 / 48-port 2.5GbE (PoE)  
Campus Access Switch



**EG1050**  
1U 48-port 1GbE / 2.5GbE (PoE) Edge  
Gateway with Wi-Fi and 5G



**ES1010 / ES1050**  
1U 48-port 1GbE / 2.5GbE (PoE)  
Access Switches



**ES1000**  
1U 24 / 48-port 1GbE (PoE)  
Access Switch



## SCALABLE, TOP-OF-RACK SWITCHES

Open infrastructure platforms  
for future-ready data centers



NOW SHIPPING!

### DS1000

1U 48-port 1GbE  
Data Center Switch



### DS2000

1U 48-port 10GbE / 25GbE  
Data Center Switch

## STORAGE

Delivering performance, efficiency and reliability without compromise

### CONTROLLERS

Next-generation controllers delivering  
performance and high availability



### SC4200

2U 24 SSD High Availability  
NVMe All-Flash PCIe® Gen 4  
Storage Controller

NOW SHIPPING!



### SC6100

2U 24 SSD High Availability  
All-Flash PCIe® Gen 5  
Storage Controller

NEW



### SC6110

2U, 32 E3 Drive Bay, PCIe®  
Gen 5 High Availability  
Storage Controller

### STORAGE EXPANSION

High-performance expandable storage,  
ideal for large scale-out environments



### SD6200

4U 90 HDD Dense Storage  
SAS-4 Expansion System

NEW



### SD4100

2U 12 HDD SAS-4  
Storage Expansion System



### SE4200

2U 24 SSD NVMe All-Flash Storage  
PCIe® Gen 4 Expansion System

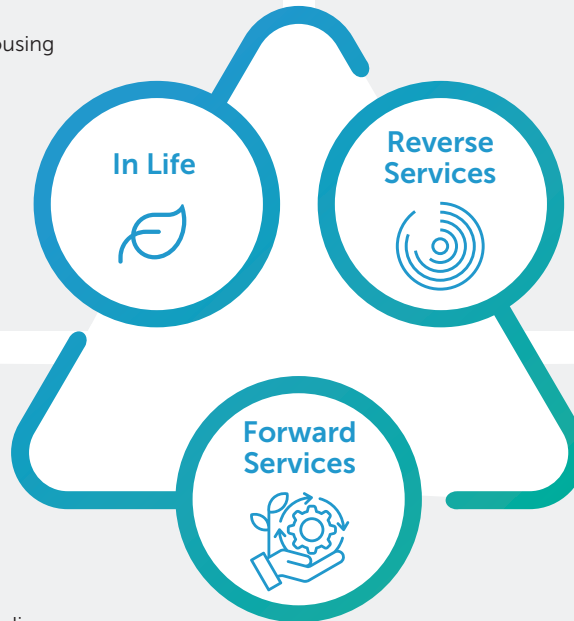
Let Celestica show you how we're powering open,  
future-ready solutions for our customers.



# Explore Celestica's Circular Services

Delivering lifecycle solutions at every phase of product life

- 24/7 call center support services
- Advanced Exchange Program (parts management, forward stocking and supply chain replenishment)
- Inventory management and warehousing
- Certified repair and refurbishment
- Redeployment and re-kitting
- Supply chain decarbonization
- Third party maintenance (TPM)



- Advanced configure to order (CTO) remanufacturing and product design
- Hardware and software upgrades
- Redeployment within your organization
- Customizable third-party maintenance and extended warranty
- IT Asset disposition
- Responsible resale, recycle and redeploy
- Data destruction
- On-site decommissioning
- ESG reporting and carbon credit programs

- Data erasure and media destruction
- Asset recovery, onsite services, parts harvesting and IP / material reclamation
- e-Stewards compliant e-Waste recycling
- Redeployment order fulfillment
- Lease return, OEM trade-in and hardware takeback

- Global remarketing for excess and obsolete (E&O) equipment, parts and components
- Facility shutdown and migration services
- Test and qualification
- Configuration
- On-site installation
- Fulfillment
- Liquid cooled deployments

## Services and Support Offering

Celestica's technical support services are available for purchase. We are here to help our customers maintain their Celestica solutions and resolve technical issues that may arise. We are dedicated to providing our customers with the resources needed to succeed.

Our Customer Experience (CX) engineers manage your support case from beginning to end, ensuring issue resolution to your satisfaction.

### Celestica Care includes:

- Knowledge Base Access
- Monday through Friday 8 am – 5 pm local access to technical support, excluding holidays
- Hardware and software troubleshooting
- Online ticket creation and tracking
- Firmware updates
- Access to software releases

### Celestica Care Plus includes all the features of Celestica Care in addition to the following:

- 24/7/365 Global access to technical support
- Defined response time service level agreement (SLA)
- Escalation Matrix - Management notification for critical and high-priority instances

In addition, we also offer an Advanced Exchange Program (AEP) that can be purchased separately for Celestica Care and Celestica Care Plus.

## Celestica's Rack Integration Services

- Regionalized global footprint with 'Made in America' supply chain options
- Rack-level design solutions and network topology
- Expertise in component, system and rack-level test
- Complex hardware integration and software configuration
- Full turnkey manufacturing solutions
- Rack-level thermal management and test (air / liquid cooling), including complex AI/ML configurations
- Waste reduction rack packaging program

**Turn to us for efficient and sustainable global distribution of your integrated rack solutions.**



## Celestica Solutions for SONiC®

Avoid vendor lock-in and reduce the cost of software and support services, with an open, flexible approach to software. Celestica delivers network solutions at scale through open SONiC NOS.

While SONiC runs across network components from many vendors, choosing the right vendor is still an important decision, because universal support doesn't mean equivalent benefits.



### Hardened Version

The community version of SONiC from Celestica includes advanced hardening features to boost reliability and availability.



### Celestica Strengthens Community SONiC

As a member of the Linux Foundation and associated working groups, new features, innovations, and fixes made by Celestica are shared with the community.



### Support Contracts Available for Purchase

Celestica can provide additional support to customers that require it.



### Custom Features Can Be Added on Request

Celestica can develop and integrate unique new features needed by customers.



North America: (Toll Free) +1 888 899 9998 | Global: +1 416 448 5800  
[contactus@celestica.com](mailto:contactus@celestica.com)

[celestica.com](https://www.celestica.com)

**in** Celestica | **f** @CelesticaInc | **in** celestica-product-solutions



© Copyright Celestica Inc. 2025. All rights reserved. <sup>TM</sup>CELESTICA & Design are existing, pending or registered trademarks of Celestica Inc. or its subsidiaries, used under license. All trademarks and registered trademarks are the property of their respective owners.